

Improving Course and Classroom Scheduling Policies through Correlation Analysis and Forecasting

Michael Rehtin, Alyssa Bobalik, Jacob Pannel, Olivia Hope

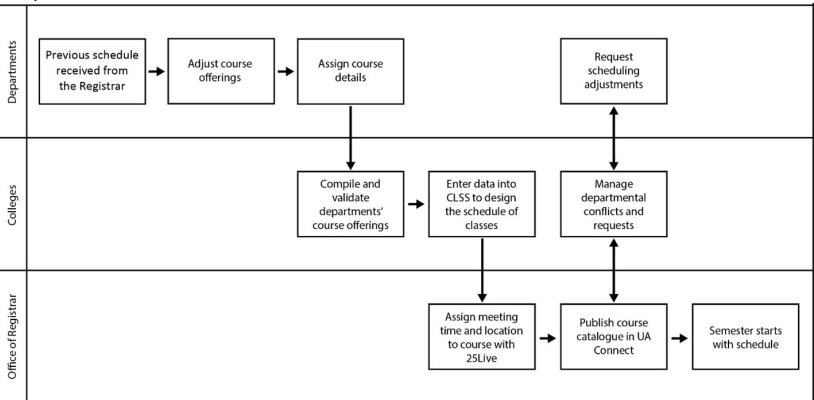
The Office of the Provost

The Provost is the chief academic officer within the University of Arkansas and works with the Chancellor to set academic priorities for the University. Individual Colleges, Departments, and the Office of the Registrar contribute most to the course and classroom scheduling process that is managed by the Office of the Provost.



Our Approach

The course and classroom scheduling process begins approximately 9 months before the semester by rolling over the previous year's schedule into the current semester at the department level.

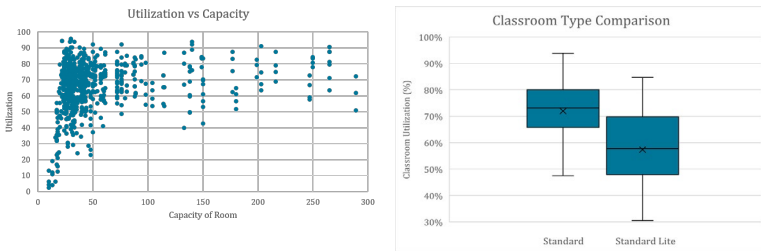


The Dean's Office of each college compiles the department proposed schedules into a master college schedule and checks that it follows the policies placed by the Office of the Provost. The course information is then entered into the scheduling software CLSS. The colleges and registrar's office validate the schedule.

The course data in CLSS is then used by the Registrar's Office to schedule classrooms using a software called 25Live. After all classrooms are assigned, the Registrar's Office publishes the course catalog into the University's web portal, UAConnect. All course and classroom conflicts are negotiated between the Registrar's Office and the colleges to finalize the schedule.

Classroom Utilization

University overall stands at 44.27% classroom utilization for all room types. To determine what affects a classroom's utilization we tested many factors; Room Capacity, Time of Day, Day of Week, and Technology Features appeared to have some correlation.



Forecasting Enrollment

Universities nationwide measure the accuracy of their predicted course demand with Enrollment Ratios. A balanced course schedule is in the ideal enrollment range from 70% to 95% with a recommended average university enrollment being 85%. Currently 62% of the University of Arkansas's course's enrollment ratios are over 95%, which is considered overloaded.

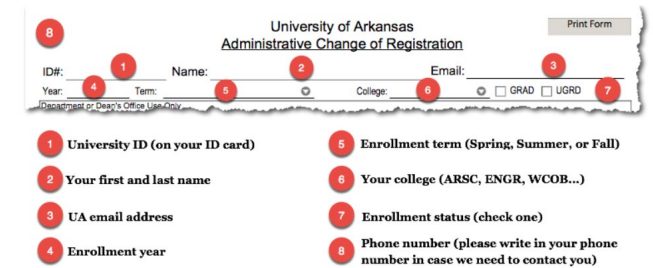
Course Subject	CHEM	Get Course Data	Clear	CHEM 1103: UNIVERSITY CHEM I					Forecast	
Course ID Number	1103			Term	University Enrollment	Capacity	Actual	Predicted		
Course Name: UNIVERSITY CHEM I										
Term	Term Code	Census	University Enrollment	Percent Enrolled						
Spring 2016	2016	467	20223	2.31%						
Fall 2016	2016.5	1404	22159	6.34%						
Spring 2017	2017	611	20582	2.97%						
Fall 2017	2017.5	1389	22584	6.15%						
Spring 2018	2018	631	20891	3.02%						
Fall 2018	2018.5	1271	23044	5.52%						
Spring 2019	2019	683	21544	3.17%						
Fall 2019	2019.5	1044	23386	4.46%						
Spring 2020	2020	579	21808	2.65%						
				Recommended Course Capacity		CHEM 1103: UNIVERSITY CHEM I		FALL 2020		
						1209				

We created a VBA tool to lower the enrollment ratio and increase the accuracy of enrollment capacities for State Minimum Core Courses. Our tool retrieves historical enrollment data for the course, forecast the course enrollment using r-studio's auto.arima function, and outputs the recommended course capacity for the next semester.

INEG Override Process

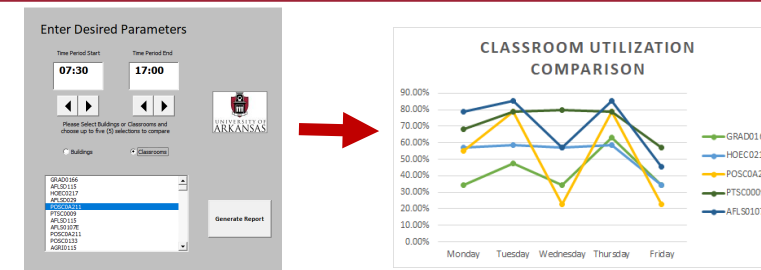
The largest contributor to waste in the override process system is students filling out the PDF form incorrectly. Currently 50% of the overrides submitted are filled out incorrectly and must be returned to students. We recommend that the INEG department updates its webpage to include step-by-step instructions on how to fill out the form and provide descriptions of what it is asking for, as is done for the Biological Sciences form. This would greatly reduce the number of errors that are seen by the INEG office and would result in less wasted time from students and faculty alike.

Student Section Instructions



Via <https://fulbright.uark.edu/departments/biology/current-students/overrides.php>

Visualization Tool



Visualizing classroom utilization data across different days and times.